

adding rich media (interactivity) to PDF

3D interaction and virtual display models

ovidiu.ca

3D content is nowadays used in many places, and can be seen in everything from mobile phone apps, to games, movies, online virtual models and manufacturing.

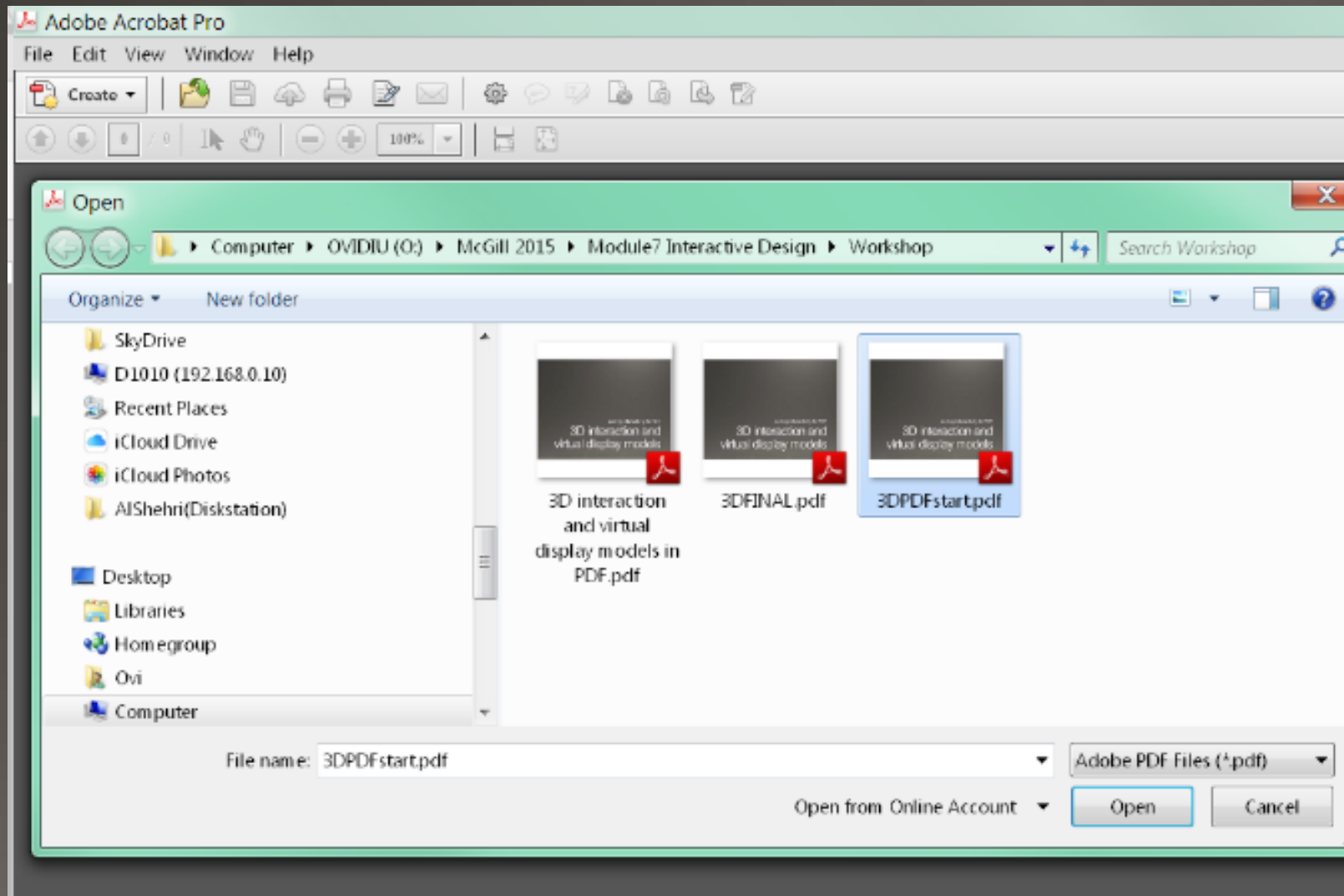
PDF file format has the capability to import and use 3D models generated in another program or available as 3D objects.

As a marketing tool, the effectiveness of this function within a PDF is remarkable, as it can be used for distributable presentations, interactive marketing brochures or proposals.

A 3D model can be easily added to an Adobe Acrobat document.

Open Acrobat (not Acrobat Reader) and load the PDF file that needs to have interactivity added to it

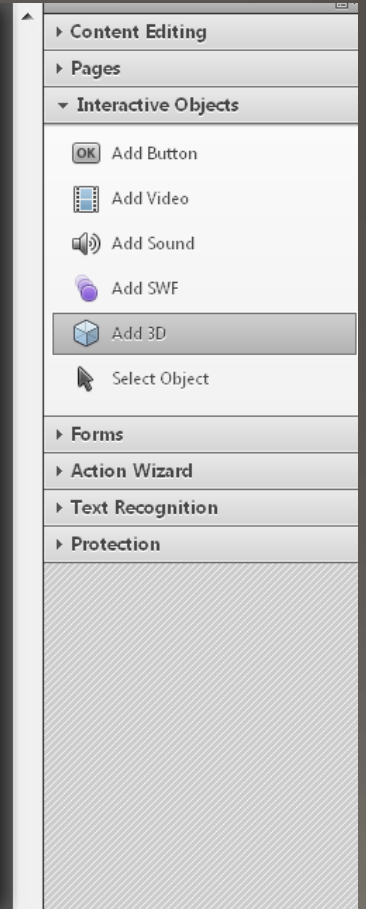
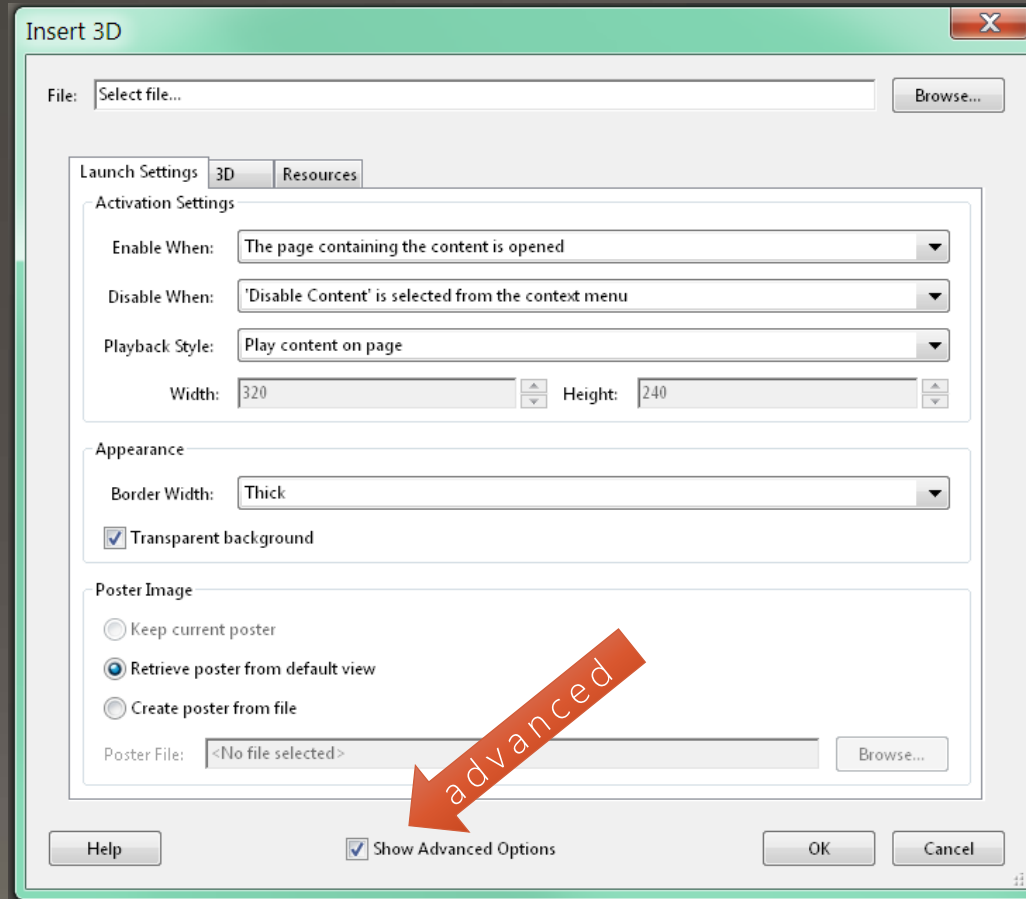
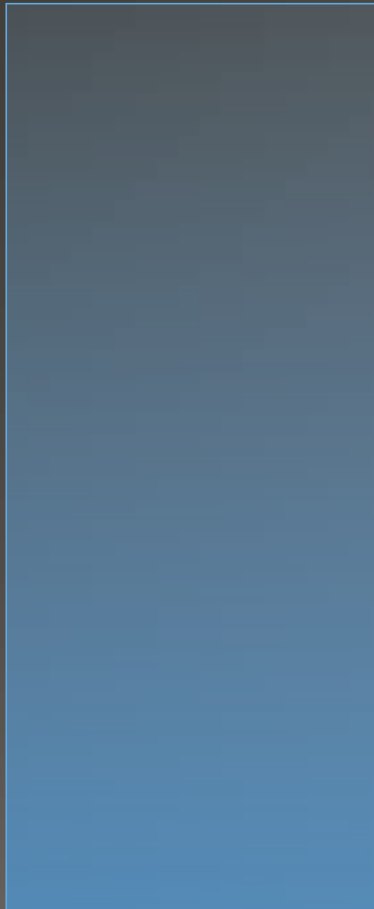
For this demo open the file "3DPDFstart.pdf" from the File / Open menu.



Adding the Interactive object (3D object in u3D format) from the "Tools" and "Interactive Objects Menu" (or "Rich Media")

Drag a rectangle on the page to define the canvas area for the 3D file.

In the Insert 3D dialog box, click Browse to select the 3D file (exhibit.u3d), and check the "show Advanced Options" to set initial 3D properties for the file.



Inserting the 3D Object advanced options

Launch Setting Tab

Enable when :the page containing content is visible

Disable when : "Disable Content" is selected from the context menu

Playback style: play content on page

Appearance

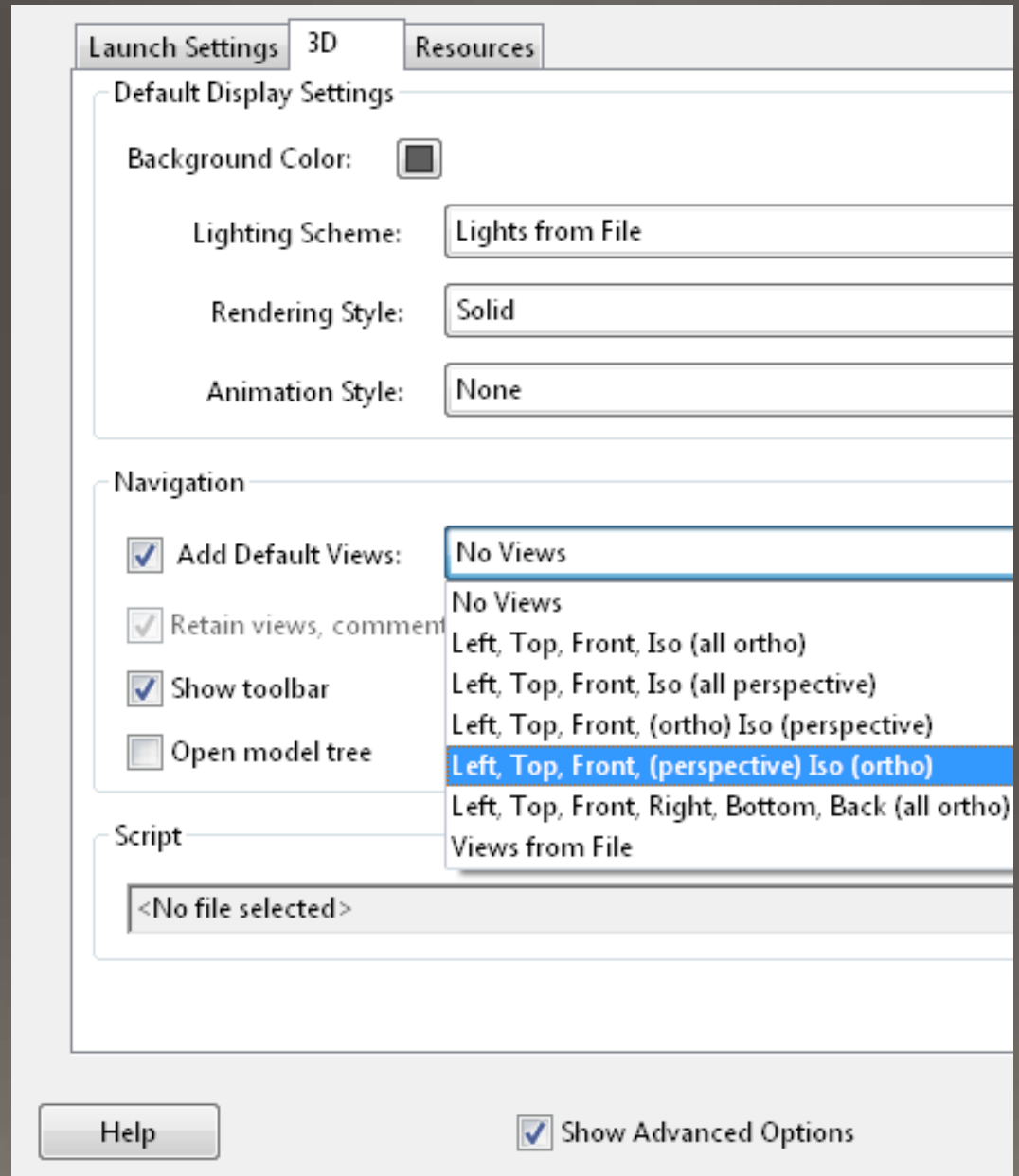
Border Width : No Border

CHECK "transparent Background"

Poster Image : retrieve Poster from File

3D Tab

Navigation :Add Default Views
Left, Top, Front (perspective)
Iso (ortho)



Interacting with the 3D virtual exhibit and changing view

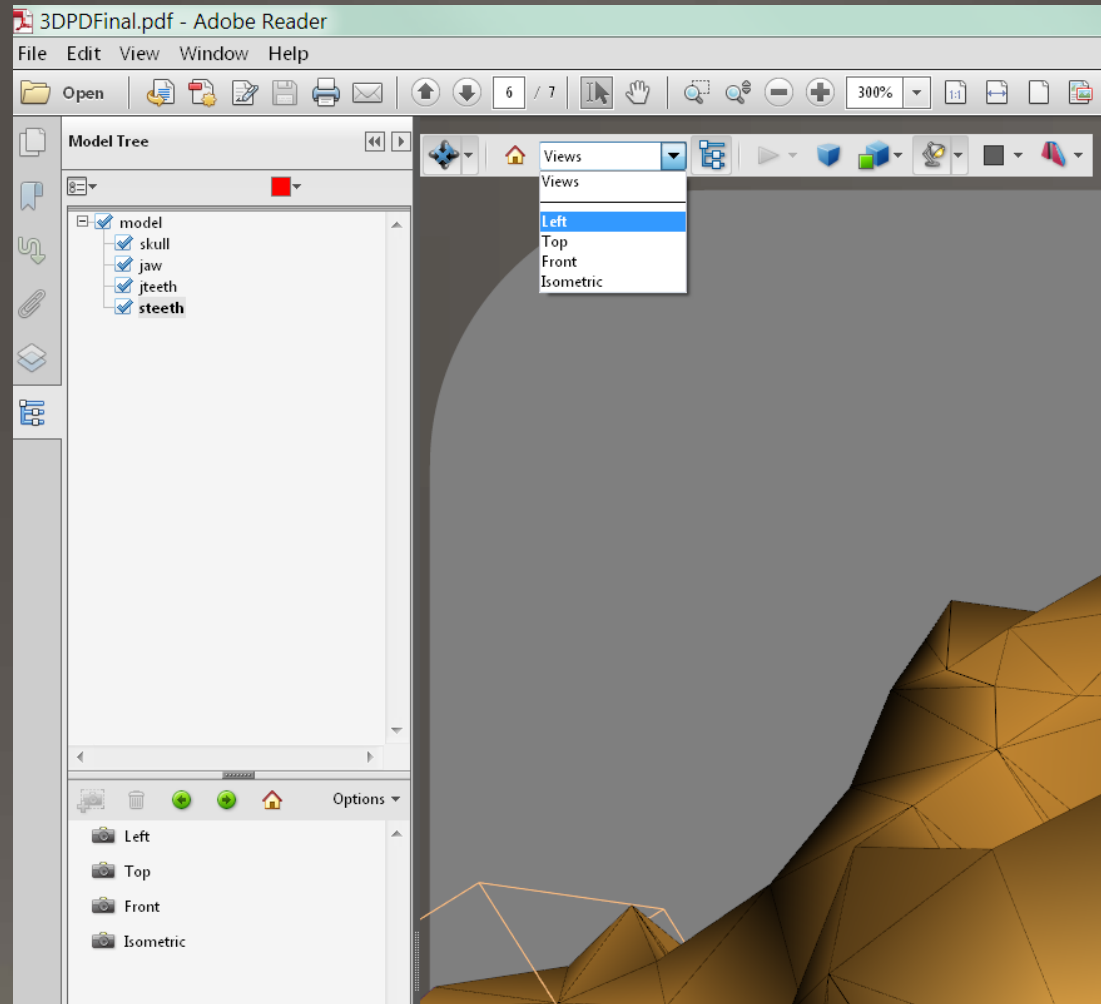
Change rendering mode, lighting, projection, and background

The default rendering mode is solid, but you can also choose another rendering mode. You can also change the lighting of the 3D model as well as the background

View Pane

Lists the views that have been defined for the 3D object. When you change a view, click one of the listed views to return the 3D model to a saved state

In our example the default views are Left, Top, Front (perspective) and Iso (ortho)



NOTE: you can also add to and edit views in the View pane. save that particular view, including the camera angle, background, lighting, and other attributes. This feature is not available for Adobe Reader

Insert 3D Object in this page



exhibit.u3d

Insert 3D Object in this area

(exhibit.u3d file, select this whole area when inserting)